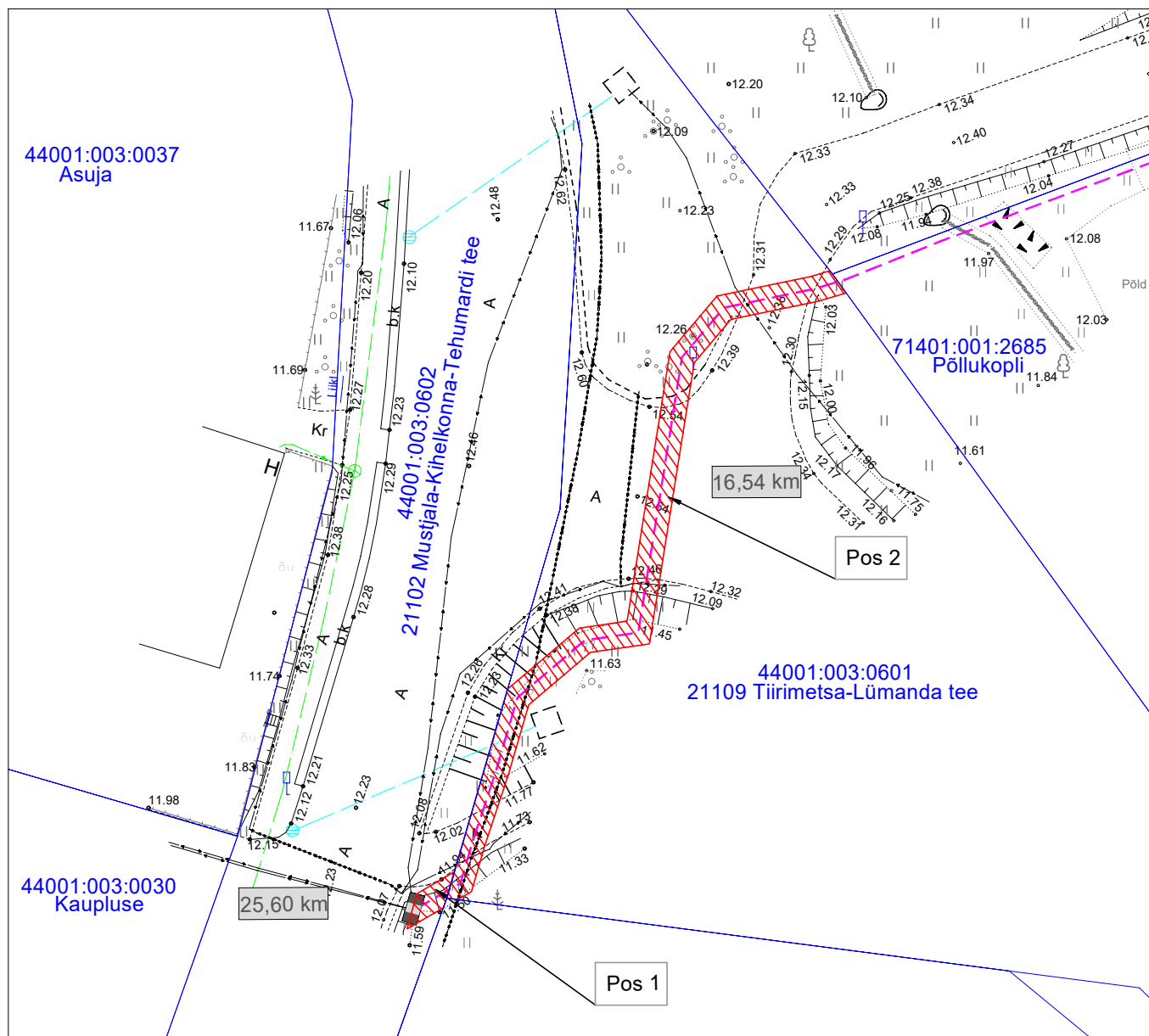


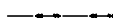
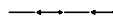




## Isikliku kasutusõiguse seadmise plaan

| IKÕ ala<br>Pos nr<br>(plaanil) | Kinnistu<br>registriosa<br>number | Katastriüksuse tunnus,<br>nimi ja sihtotstarve;                                | Ala pindala<br>ruutmeetrites<br>m <sup>2</sup> |
|--------------------------------|-----------------------------------|--|--|
| Pos 1                          | 13581450                          | 44001:003:0602<br>21102 Mustjala-Kihelkonna Tehumardi tee<br><br>Transpordimaa | 7  |
| Pos 2                          | 13577650                          | 44001:003:0601<br>21109 Tiirimetsa-Lümanda tee<br><br>Transpordimaa            | 124  |



| Tingmärgid  |                                      |
|---|--------------------------------------|
|  | IKÕ seadmise ala                     |
|  | proj 0,4 kV maakaabelliin            |
|  | olemasolev 10 kV maakaabelliin       |
|  | olemasolev 0,4 kV maakaabelliin      |
|  | olemasolev 0,4 kV jaotuskilp         |
|  | Kinnistute piir                      |
|   | Projekteeritava maakaabli pikkus 66m |

|   |                   |                     |                       |
|---|-------------------|---------------------|-----------------------|
| Projeti nimi/aadress<br>Koplipõllu Lümanda küla Saaremaa vald Saare maakond |                   |                     | Töö nr<br>LC2072      |
| Koostaja<br>Heiki Jakobson  | Mõõtkava<br>1:500 | Leht/ formaat<br>A4 | Kuupäev<br>18.12.2024 |